

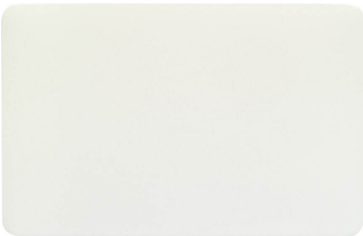


## Arnhem Central Station - UN Studio

<https://www.euramaxlab.com/projects/arnhem-central-station>

**Architect:** UN Studio  
**Location:** Arnhem, Netherlands  
**Sector:** Station  
**Manufacturer:** Alpolic

Arnhem Central is a large urban plan development that consists of diverse programmes which together form a vibrant transport hub. Passenger flows for six different modes of transport are organised by the central transfer terminal. High quality three layer FEVE was chosen in white to offer the construction a clean design. A benefit of FEVE paints is the anti graffiti character that the coating offers, keeping the building clean as well. The aluminium composite cladding enables the smooth curving of the cladding components.



**EURABUILD – OYSTER  
WHITE**



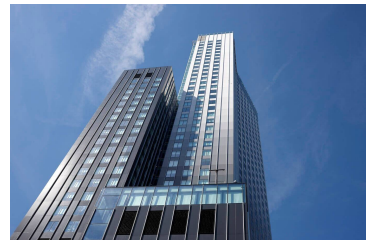
**Aluminium Composite Panel  
Flat**



**Krimpenerwaard College**



**Thialf - Ice Stadium**



**Maastower**